



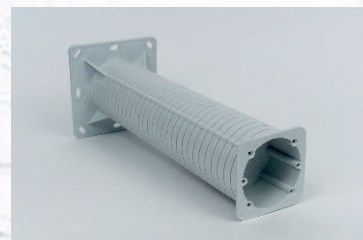
2018 News



video instructions KEZ 300

KEZ 300

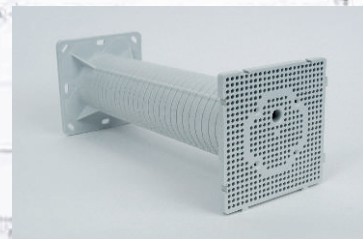
- for the device installation on insulated facade of the building
- insulation thickness 50-300 mm
- robust design
- insulating parts and mounting accessories included in the package



video instructions MDZ 300

MDZ 300

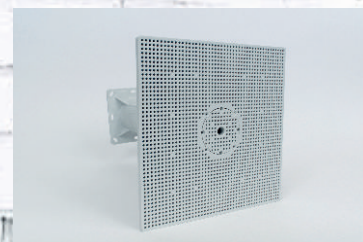
- for electrical devices installation on insulated facade of the building
- the desk dimensions 120 x 120 mm
- insulation thickness 50-300 mm
- robust construction- maximum distance of 180 mm from the wall at maximum load of 40N
- screws for mounting desk 4-5 mm



video instructions MDZ XL 300

MDZ XL 300

- for bigger size of electrical device installation on insulated facade of the building (lights, cameras etc...)
- the desk dimensions 240 x 240 mm
- insulation thickness 50-300 mm
- robust construction- maximum distance of 180 mm from the wall at maximum load of 40N
- screws for mounting desk 4-5 mm
- space for clamping integrated



video instructions PP 80/45/6

PP 80/45/6

- KOPOBOX extension to assemble 12x device 45x45 mm
- to install data and other special devices possible
- solid screw fixation
- partition wall included in package



SKLD 2

- KUL 68-45/LD a KPRL 68-70/LD boxes universal coupling
- connected boxes can be used to install devices to single-multi instrument washer
- molded holder with 10 pcs is possible to use as a distance gauge for a boxes and cable diameters gauge

